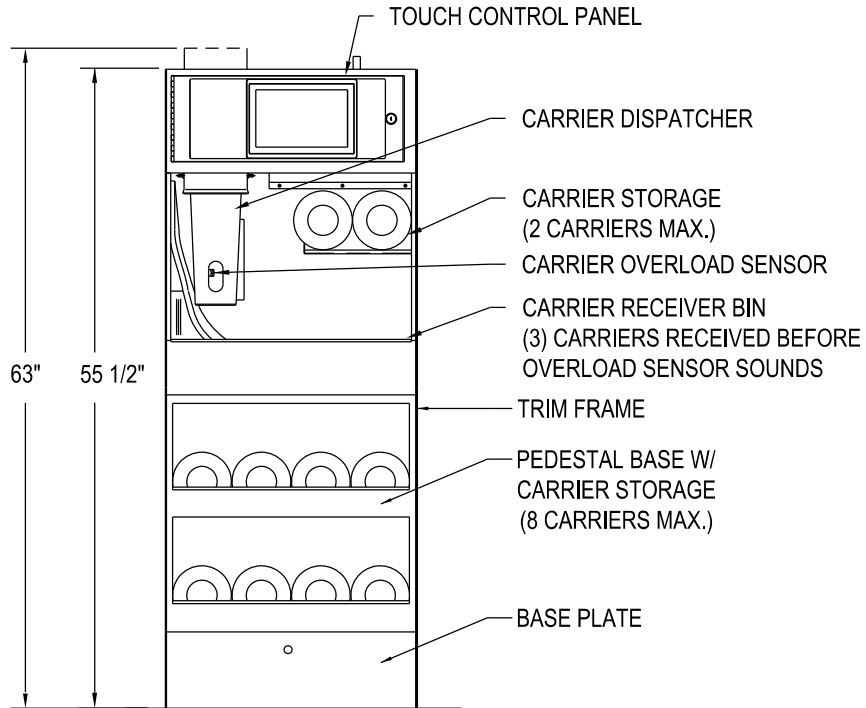


NOTES:

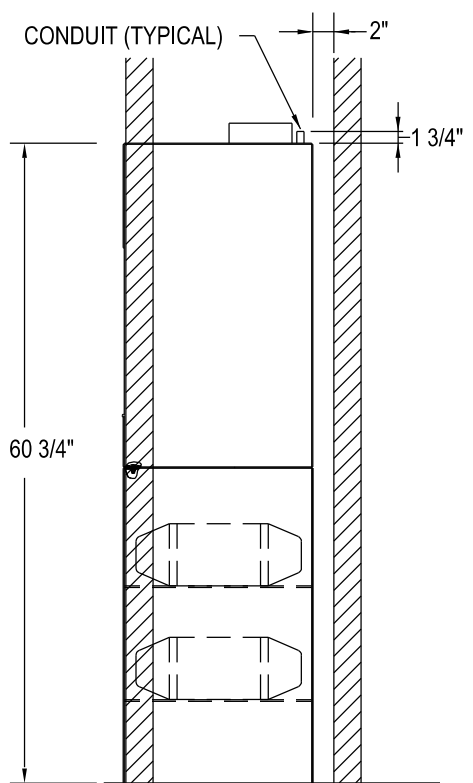
1. STATION REQUIRES 120 VOLT, 5 AMP DEDICATED CIRCUIT (PROVIDED BY OTHERS).
2. ONE (7/8") DIA. HOLE ON TOP OF STATION FOR COMMUNICATION CABLES AND ONE (7/8") CONDUIT FOR ELECTRICAL CONNECTION.
3. STATION IS FLOOR MOUNTED.
4. CONTROL PANEL IS HEIGHT IS APPROXIMATELY 56" TO CENTER. STATION IS NOT SUBJECT TO ADA REQUIREMENTS SINCE IT IS NOT USED BY THE PUBLIC.
5. ROUGH OPENING IS 20"x29"x60 3/4". DO NOT ENCLOSE OR DRYWALL UNTIL STATION, TUBING AND ELECTRICAL CONNECTION ARE COMPLETED.
6. STATION WEIGHT IS 227 LBS.

ETHERNET CONNECTION TO AN ACTIVE JACK (INSIDE UNIT) ON THE SAME IT NETWORK AS THE PTS CONTROL CENTER (BY OTHERS)
 ELECTRICAL CONNECTION (BY OTHERS)
 SERVICE DISCONNECT FACTORY WIRED (INSIDE UNIT)

PLAN VIEW



FRONT VIEW



SIDE VIEW



1401 Tangier Drive
 Baltimore, Maryland 21220
 T 410.931.8800, F 410.931.4660
 800.296.PEVCO (7382), WWW.PEVCO.COM

**WALL RECESSED COMPACT STATION
 WITH CARRIER STORAGE PEDESTAL BASE
 (ETHERNET COMMUNICATIONS)**

6" COMPUTERIZED PNEUMATIC TUBE SYSTEMS

SCALE	NONE	DATE
DRAWN	S.D.W.	1.14.13
REVISED	A.V.	01.30.25
	-	-
DRAWING NUMBER	PEV.200.38A	REVISION 4