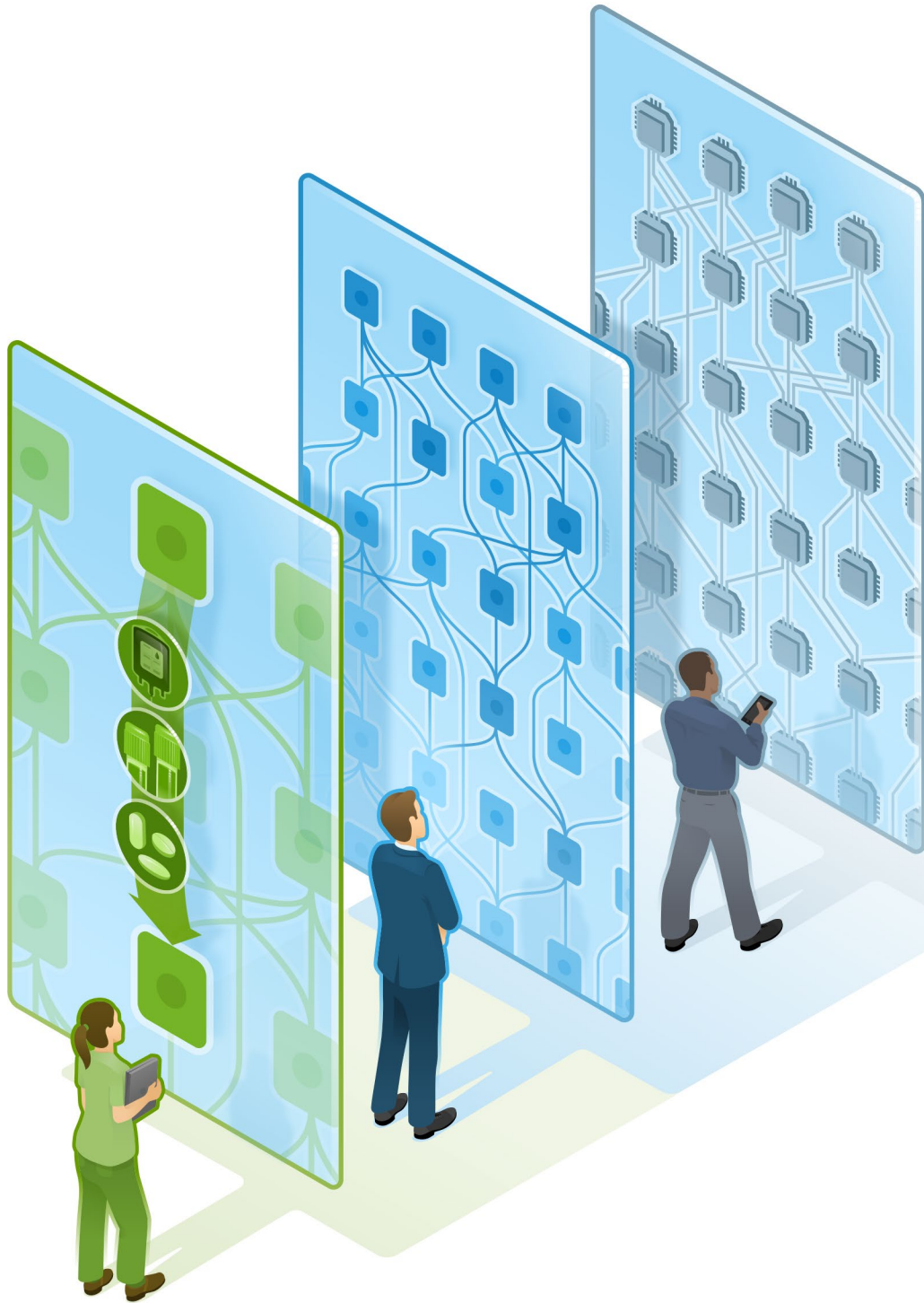


Pevco Atlas™

DELIVERY MANAGEMENT SOFTWARE



Pevco™

Healthcare's Pneumatic Tube Delivery System Expert™

pevco.com

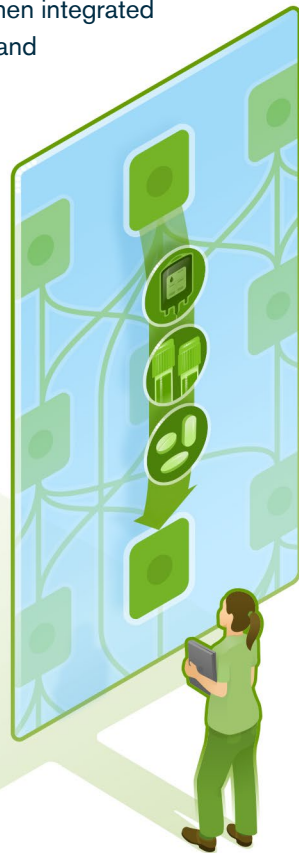
Pevco Atlas™ manages the delivery of patient-critical items through a hospital's pneumatic tube system – maintaining chain of custody, reducing errors and shortening turnaround times.



For Clinicians

Monitors and documents deliveries in real-time to support the transport of high-value items

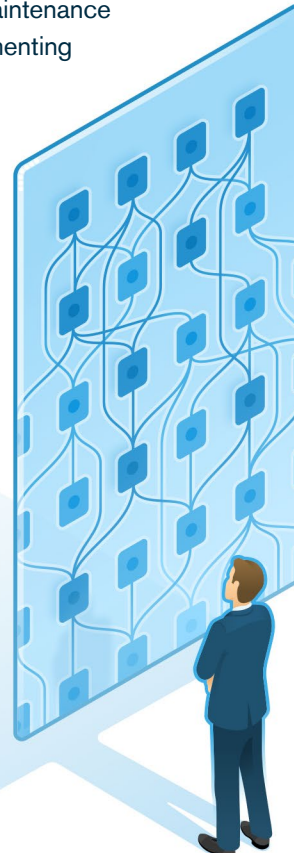
- Customizable dashboard can be filtered by department or stations, so clinicians only see delivery data relevant to them
- Alerts staff to important events when integrated with leading nurse call systems
- Streamlines data access when integrated with leading EMR systems
- Links clinicians to the items they send and receive when integrated with Tyco C-Cure™ and Lenel OnGuard™ employee access management systems



For Facility Managers

Provides a user-friendly interface that makes monitoring transactions, setting priorities and controlling devices easy

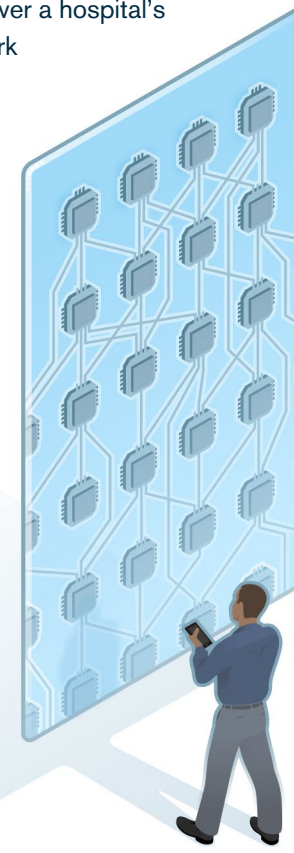
- Supports three levels of user access: Administrator, Maintenance and Clinical
- Enables technicians to access its dashboard from any networked computer with a web browser
- Integrates with BMS (building management systems) to provide consolidated management of building systems
- Improves planned maintenance scheduling by documenting device cycle counts



For IT Managers

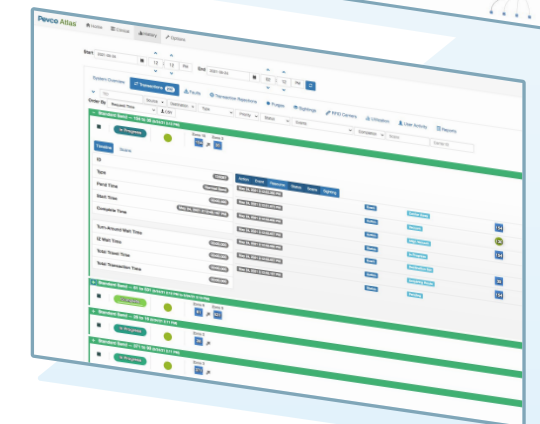
Runs as a service on virtual machines and servers to comply with network management requirements

- Integrates with Microsoft Active Directory™ for user authentication
- Supports HL7 protocols and web service communications to share data with other hospital systems
- Stores data on industry standard SQL Server database clusters
- Uses standard TCP/IP protocols to communicate over a hospital's Ethernet network



User-Friendly

Built for Healthcare - with easy-to-use dashboards and real-time delivery monitoring



IT-Ready

Integrates with user authentication, nurse call and EMR systems




pevco.com

1401 Tangier Drive
Baltimore, Maryland 21220

Tel

410.931.8800
800.296.7382

Fax

410.931.4660