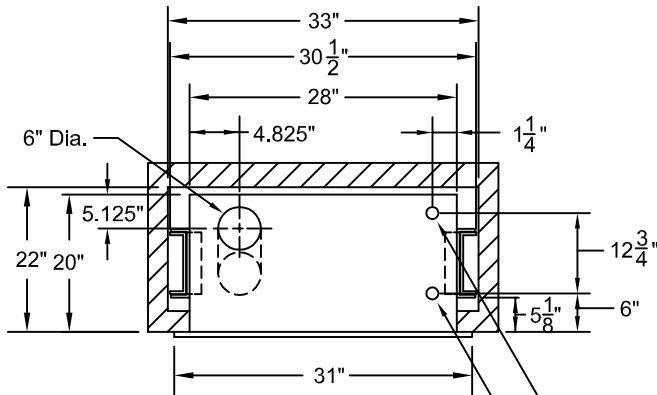


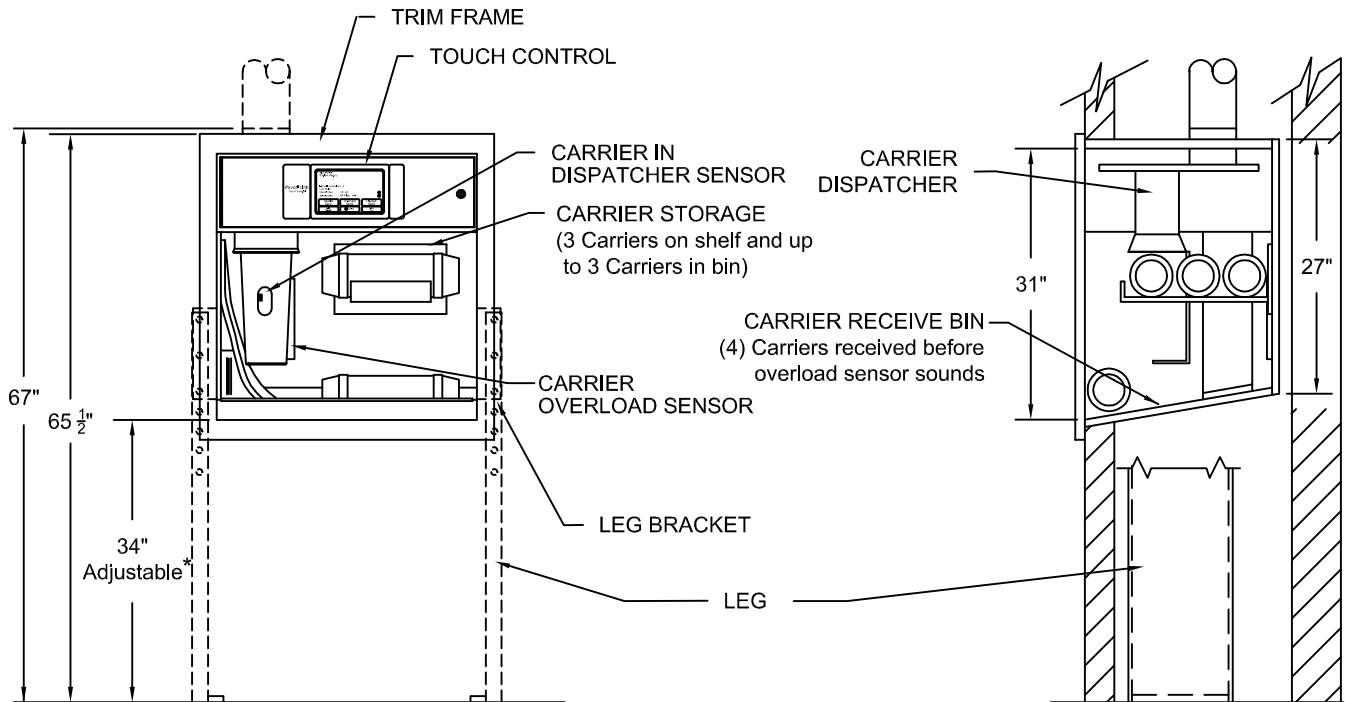
NOTES:

1. STATION REQUIRES 120 VOLT, 5 AMP DEDICATED CIRCUIT (PROVIDED BY OTHERS).
2. ONE (7/8") DIA HOLE LOCATED ON TOP OF STATION FOR AN ETHERNET CONNECTION (PROVIDED BY OTHERS) AND ONE (7/8") CONDUIT LOCATED ON TOP OF STATION IS FOR AN ELECTRICAL CONNECTION (PROVIDED BY OTHERS).
3. STATION IS FLOOR MOUNTED.
4. LEG BRACKETS ARE IN 2" INCREMENTS RANGING FROM 1'-6" TO 3'-8". * VERIFY WITH OWNER ANY MILLWORK THAT MIGHT INTERFERE WITH STATION HEIGHT.
5. TOUCH CONTROL HEIGHT IS APPROXIMATELY 5'-0".
STATION IS NOT SUBJECT TO ADA REQUIREMENTS SINCE IT IS NOT USED BY THE PUBLIC.
6. ROUGH OPENING IS 22" x 33" x 67". DO NOT ENCLOSE OR DRYWALL UNTIL STATION, TUBING, ETHERNET AND ELECTRICAL CONNECTION ARE COMPLETED.
7. STATION WEIGHT IS 165 LBS.



PLAN VIEW

ETHERNET CONNECTION TO AN ACTIVE JACK (INSIDE UNIT) ON THE SAME IT NETWORK AS THE PTS CONTROL CENTER (BY OTHERS)
ELECTRICAL CONNECTION (BY OTHERS)
SERVICE DISCONNECT FACTORY WIRED (INSIDE UNIT)



FRONT VIEW

SIDE SECTION



1401 Tangier Drive
Baltimore, Maryland 21220
T 410.931.8800, F 410.931.4660
800.296.PEVCO (7382), www.pevco.com

**WALL RECESSED HIGH CAPACITY
STANDARD STATION
(Ethernet Communications)**

6" COMPUTERIZED PNEUMATIC TUBE SYSTEMS

SCALE	NONE	DATE
DRAWN	SDW	02.04.13
REVISED	SDW	05.24.13
	-	-
DRAWING NUMBER	PEV200.02A	REVISION 1